

equipment catalog



food²impress
catering

CHAIRS



GARDEN FOLDING WHITE
Code: CH-004



CHIVARY GOLD
Code: CH-001



NAPOLEON PLEXI
Colors: Transparent | Gold
Codes: CH-005 | CH-017



CROSSBACK WOODEN
Colors: Natural | White
Code: CH-009 | CH-010



WOODEN PHOENIX
Code: CH-017



CHAMELEON GOLD
Code: CH-011

STOOLS & ARMCHAIRS / SOFAS



TOLIX STOOL
Colors: White | Black
Code: CH-008 | CH-007



CHAMELEON STOOL GOLD
Code: CH-018



VELVET ARMCHAIR
Colors: Mustard | Olive Green
Code: CH-019 | CH-020



DARK GREEN VELVET SOFA
Code: CH-021

— TABLES & HIGH TABLES —



ROUND BQT

Sizes: 180cm | 150cm | 120cm
Code: TA-001 | TA-002 | TA-003



RECTANGLE BQT

Size: 180 x 75cm
Code: TA-004



RECTANGLE WOODEN

Size: 200x75cm
Code: TA-006



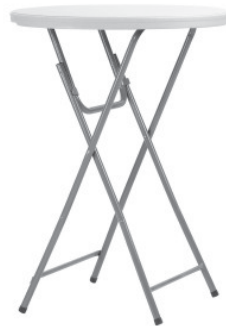
RECTANGLE WOODEN

Size: 200x150cm
Code: TA-012



RECTANGLE HIGH TABLE

Size: 110x60cm
Code: TA-010



ROUND COCKTAIL HIGH TABLE

Size: 80cm
Code: TA-009



WOODEN CARVED

Size: 180x90cm
Code: TA-018



OVAL WOODEN WITH CARVED BASE

Size: 240x100cm
Code: TA-023



OVAL WOODEN
WITH GOLD BASE
Size: 240x100cm
Code: TA-011



RECTANGLE WOODEN
(4 Carved Legs)
Size: 240x120cm
Code: TA-015



LEBANESE STYLE
Size: 220x110cm
Code: TA-013



RECTANGLE WOODEN
MIRROR TABLE (4 Carved Legs)
Size: 240x120cm
Code: TA-017



RECTANGLE WOODEN WHITE
TABLE WITH METALLIC STRUCTURE
AND HANGING LIGHT (4 Carved Legs)
Size: 240x120cm
Code: TA-022 | TA-024 | TA-025



ROUND PLAIN TABLECLOTH
Sizes for tables: 180cm | 80cm

For 80cm table:



White
Code: CL-003

For 180cm table:



White
Code: CL-001



Black
Code: CL-004



Mocha
Code: CL-012



Grey
Code: CL-007



Dark Green
Code: CL-051



Dusty Blue
Code: CL-011



Bordeaux
Code: CL-009



Rotten Apple
Code: CL-010



Dark Blue
Code: CL-008



WAVERLY COUNTRY LIFE
Color: Green
Size for table: 180cm
Code: CL-052

NEW



WAVERLY COUNTRY LIFE
Color: Red
Size for table: 180cm
Code: CL-053

LINENS



RECTANGLE PLAIN TABLECLOTH
Size for table: 180x75cm



White
Code: CL-019



Black
Code: CL-020



Mocha
Code: CL-050



Grey
Code: CL-030



Bordeaux
Code: CL-032



Rotten Apple
Code: CL-013



Dark Blue
Code: CL-042



Dark Green
Code: CL-056



WAVERLY COUNTRY LIFE
Color: Green
Size for table: 180 x 75cm
Code: CL-055

NEW



WAVERLY COUNTRY LIFE
Color: Red
Size for table: 180 x 75cm
Code: CL-054

LINENS



RECTANGLE SPANDEX
Size for table: 180x75cm
Codes: CL-040 | CL-023



CHAIR CUSHIONS
Codes: CL-024 | CL-025



NAPKINS
Size: 45x45cm



White
Code: CL-000



Black
Code: CL-038



Mocha
Code: CL-048



Grey
Code: CL-057



Dark Green
Code: CL-037



Dusty Blue
Code: CL-039



Bordeaux
Code: CL-043



Rotten Apple
Code: CL-035



Dark Blue
Code: CL-044



Mint
Code: CL-058



Red Waverly Country Life
Code: CL-045



Green Waverly Country Life
Code: CL-046



Blue Waverly Country Life
Code: CL- 060

TABLE SET



ROUND A' CLASS DINNERWARE

Sizes: 27cm | 20cm | 16cm

Codes: TASE-003 | TASE-002 | TASE-001



SQUARE A' CLASS DINNERWARE

Sizes: 29cm | 20cm

Codes: TASE-006 | TASE-005



ASHTRAY

Code: TASE-023



**SALT & PEPPER
SHAKER (set)**

Code: TASE-024



**TABLE NUMBER
STAND METALLIC**

Code: TASE-038



A'CLASS ROUND FLATWARE

Dinner: Fork | Knife | Spoon

Codes: TASE-025 | TASE-026 | TASE-027

Dessert: Fork

Codes: TASE-028



A'CLASS FLAT FLATWARE

Dinner: Fork | Knife | Spoon

Codes: TASE-032 | TASE-033 | TASE-034

Dessert: Spoon

Codes: TASE-037



GOLD CUTLERY

Dinner: Fork | Knife | Spoon

Codes: TASE-056 | TASE-057 | TASE-058

Dessert: Spoon

Code: TASE-059

CHARGER PLATES



GOLD RIM
Code: TASE-007



BEADED CLEAR
Code: TASE- 008



EMERLAND WITH
GOLD DETAILS
Code: TASE-011



MAUVE WITH
GOLD DETAILS
Code: TASE-009



WHITE WITH
GOLD DETAILS
Code: TASE-010



GREY VINTAGE
FLORAL
Code: TASE-073



FLORENTINE WHITE
Code:



FLORENTINE
LIGHT TURQUOISE
Code: TASE-085



FLORENTINE BLUE
Code: TASE-088



FLORENTINE LIGHT PINK
Code: TASE-086



FLORENTINE BLACK
Code: TASE-087

GLASSES



BOMOLI WINE GLASS
Size: 34cl
Code: TASE-012



B'CLASS WINE GLASS
Size: 26cl
Code: TASE-014



CHAMPEGNE
Code: TASE-019



PUNCH
Code: TASE-020



SOFT DRINKS & WATER
Code: TASE-017



WHISKEY
Code: TASE-018



SHOT
Code: TASE-021



COFFEE/TEA CUP
Code: TASE-022

GLASSES



MELODIA CRYSTAL CLEAR SET

Size: 16cl | 26cl | 20cl

Code: TASE-046 | TASE-045 | TASE-044



BLUE VINTAGE

Sizes: 17cm | 15.5cm

Code: TASE-084 | TASE-049



MAUVE VINTAGE

Sizes: 17cm | 15.5cm

Code: TASE-016 | TASE-015



GREEN VINTAGE

Sizes: 17cm | 15.5cm

Code: TASE-043 | TASE-042

CHAFING & FOOD SERVICE



RECTANGLE CHAFER
Code: FOSE-001



RECTANGLE ROLL CHAFER
Code: FOSE-002



CARVING STATION
Code: FOSE-012



CHAFING FUEL GEL
Code: FOSE-005



ICE BUCKET
Code: FOSE-007 | FOSE-008
Sizes: Whiskey | Champagne



CHAFING PANS
Sizes: 1 | 1/2
Code: FOSE-003 | FOSE-004



PLASTIC BEVERAGE
ISOTHERMAL (for punch)
Code: FOSE-025



SALAD BOWL MELAMINE
Colour: White
Code: FOSE-030

CHAFING & FOOD SERVICE



WATER/PUNCH PITCHER
Code: FOSE-022



FOOD ISOTHERMAL
(NO ELECTRICITY 6 G/N 1/1 6.5cm)
Code: FOSE-024



ROUND TRAY
Code: FOSE-023



APPETIZER BOWL
Code: FOSE-011



BREAD KNIFE | CAKE SERVER & KNIFE | SERVING FORK | SERVING LADLE | SERVING SPOON | ICE TONG | SERVING TONG
Codes: FOSE-013 | FOSE-014 | FOSE-15 | FOSE-016 | FOSE-017 | FOSE-019 | FOSE-018

DISPLAY & ACCESSORIES



ROUND FULL TABLE MIRROR

Size: 180cm

Code: TASE-039



RECTANGLE FULL TABLE MIRROR

Size: 180 x 75cm

Code: TASE-063

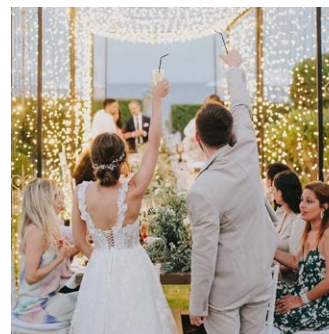
LIGHTS



FAIRY LIGHTS CURTAIN
Plain Version | Heavy Duty
Code:



FAIRY LIGHTS
Code:



FAIRY LIGHTS TUNNEL
30 / 15cm drop
Code: STR-003



CHANDELIER
Code: LI-008



STRING LIGHTS
(if poles exist)



- | | |
|-----------------------|--------|
| • For 100-199 seats | LI-001 |
| • For 200-499 seats | LI-002 |
| • For 500-799 seats | LI-003 |
| • For 800-999 seats | LI-004 |
| • For 1000-1299 seats | LI-005 |



SQUARE WOODEN BASE
FOR STRING LIGHTS
Size: 150 x 200cm
Code: LI-006

TENTS, STAGING & FLOORING



MARQUEE TENT
(with window and linen)
Sizes: 4x4m | 5x5m
Codes: TENT-001



WOODEN STAGE
Sizes: 4x4m | 6x4m | 6x6m
Codes: STAGE-002 | STAGE-003 | STAGE-004



WHITE WOODEN STAGE
Sizes: 4x4m | 6x4m | 6x6m
Codes: STAGE-005 | STAGE-006 | STAGE-007

OUTDOOR & EVENT



PATIO HEATER (without propane tank)
Code: HEAT-001



BELT STANCHION
Code: B.S-001

SPECIALIZED EQUIPMENT



WHITE BAR LEBANESE STYLE

Size: 190x90cm

(115cm height without metallic structure)

Code: BAR-001



HANDMADE WOODEN BAR CART

Size: 190x90cm

(115cm height without metallic structure)

Code: BAR-002



HANDMADE WOODEN BUFFET CART

Size: 190x90cm

(115cm height without metallic structure)

Code: BUFFET-001



COCKTAIL GREEN BAR

Size: 190x90cm

(115cm height without metallic structure)

Code: BAR-003



LEBANESE STYLE BUFFET

Size: 220x110cm

Code: TA-013

SPECIAL STRUCTURES



METAL CANOPY
WITH CHANDELIERS
Code: STR-004



WOODEN CANOPY FOR DANCE FLOOR AREA
With fairylights | Without Fairy Lights
Code: STR-005



METALLIC TUNNEL
Fairy lights | Fairy lights & chandeliers
Code: STR-002 | STR-003



WHITE FAIRY LIGHTS
TUNNEL FOR BUFFET
Code: DECO-003



METAL CANOPY FOR HEAD TABLE WITH
GOLD DETAILS, ETHNIC ARABIC LIGHTS
AND ARTIFICIAL FLOWERS
Code: STR-001



CANOPY FOR WOODEN
DANCING STAGE
Code: CANOPY-001

SPECIAL STRUCTURES



WOODEN CANOPY
WITH DRAPE AND LOFT
Code:



WOODEN FLOWER CANOPY
WITH ETHNIC LIGHTS
Code: STR-006



WOODEN CANOPY FOR DANCING
STAGE WITH DRAPES
Code: CANOPY-001



WOODEN STRUCTURE FOR
HEAD TABLE WITH EDISON
LIGHTS & ARTIFICIAL FLOWERS
Code:

TERMS & CONDITIONS

- The above prices are subject to VAT (19%)
- Prices may change without any notice
- A deposit is required to reserve the products
- Delivery charges will be applied based on the location
- All equipment shall be returned in a good condition, in case of damage charges will apply
- Images are for reference only; Actual item may look different

